

# ALPHAMED Instruction manual

## Infrared Forehead Thermometer

Model:UFR106



Order here!



### Introduction

▲Your new Infrared forehead thermometer uses advanced infrared (IR) technology to measure temperature instantly and accurately on the forehead or object.

▲Easy to use and less measurement time

This thermometer does not need to contact body or object to ensure the safety and hygiene. Its ergonomic design makes this thermometer be simple and very easy to check the temperature. It only takes 1 second to take measurement and reading.

▲Body and object modes

This thermometer supports to measure temperature of body and object. Measuring range of object mode is 0.0 to 100.0°C (32.0°F~199.9°F). That means except to take body temperature, it also supports to take the surface temperature of object as below,

- Surface temperature of milk in the bottle;
- Surface temperature of baby bath;
- Environment temperature.

▲Color visible indication of alarm and alarm sounds

When body temperature is over 37.5°C, color indicator will show red color and an alarm sounds for 10 times.

▲Memory function

It stores up to 20 sets recent measurement data.

▲Auto power off

Automatically power off if left idle for Approx 60s.

▲Measurement

Measurement time interval in 15s and the measurement distance is within 1~3cm.

Please read the manual carefully before you use the unit, and keep for future reference.

▲Intended use :

The Infrared Thermometer is intended for the intermittent measurement and monitoring of human body temperature from forehead or object. The device is indicated for use by people of all ages at home care and in hospital.

### Safety Information

To assure the correct use of the product, basic safety measures should always be followed including the warning and the caution listed in the instruction manual :

#### Symbol descriptions

The following symbols may appear in this manual, on the label, on the device, or on its accessories. Some of the symbols represent standards and compliances associated with the device and its use.

	WARNING: This alert identifies hazards that may cause serious personal injury or death.
	CAUTION: This alert identifies hazards that may cause minor personal injury, product damage, or property damage.
	Type BF applied part
	Manufacturer
<b>SN</b>	Specifies serial number
	<b>DISPOSAL:</b> Do not dispose this product as unsorted municipal waste. Collection of such waste separately for special treatment is necessary.
	Direct current
	Follow instructions for use
	CAUTION: Consult accompanying documents

▲This thermometer is not intended to substitute for a consultation with your physician. The forehead scan temperature serves as a reference only. It cannot be a judgment on fever.

▲Basic safety precautions should always be observed, especially when the thermometer is used on or near children and disabled persons.

▲Please place the device unreachable by young.

▲Avoid direct sunlight.

▲Do not touch the lens.

▲No modification of this device is allowed.

▲The swallowing of small parts like packing bag, battery, battery cover and so on may cause the suffocation.

▲Please do not use a dilution agent, alcohol or petrol to clean the unit. Please treat it gently and prevent the falling from a high place.

▲Please do not immerse it in liquid.

Never leave battery in the battery compartment for a long time without use, as they may leak and cause damage to the unit.

▲Please take off the battery if you do not intend to use within 3 months. Replace with new batteries if the unit display a low battery symbol.

▲Do not mix the old and new batteries together.

▲Do not use during the transportation.

#### ▲ WARNING:

Do not dispose of electrical appliances as unsorted municipal waste, use separate collection facilities. Contact your local government for information regarding the collection systems available. If electrical appliances are disposed of in landfills or dumps, hazardous substances can leak into the groundwater and get into the food chain, damaging your health and well-being.

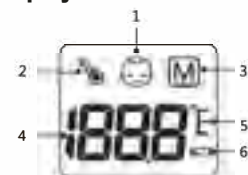
#### Classification

- Internally powered equipment;
- Type BF applied part;
- Protection against ingress of water or Particulate matter: IP21;
- Not category AP/APG equipment;
- Mode of operation: Continuous operation.

▲The user must check that the equipment functions safely and see that it is in proper working condition before being used.

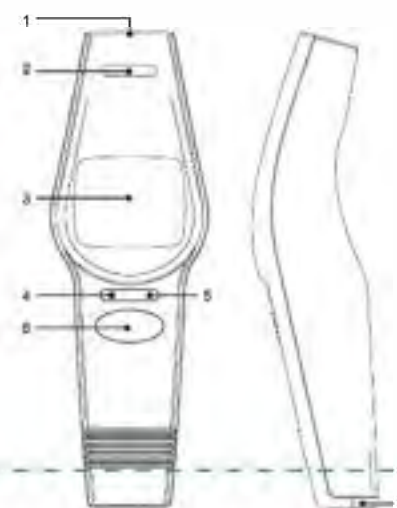
### Product Structure

#### -Display



1. Body temperature indicator
2. Object temperature indicator
3. Memory mode
4. Temperature reading
5. Temperature unit
6. Low battery indicator

#### -Body



1. Auto-sense Probe
2. Display Screen
3. Display Screen
4. °C/°F Button
4. Mode Button
6. START/STOP Button
7. Battery Cover

### Battery Installation

Remove the battery cover from the battery compartment, insert the battery.

1. Remove the battery cover from the battery compartment as the arrow direction accordingly.



2. Insert 2 AAA powerful batteries into the compartment and ensure each battery is in the proper direction. Positive (+) and Negative (-) are displayed on the back of battery cover.



3. Close the battery cover.



#### Low battery and replacement

When power on, the low battery symbol will display once the unit starts to work, and you must replace with new batteries, otherwise the unit can't work.

#### Battery type and replacement

Please use 2 pcs AAA identical 1.5V alkaline batteries.

Do not use the batteries beyond their expiry date.

Please remove the batteries if you do not need to use for long time.

#### WARNING

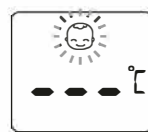
Dispose of the battery in accordance with all federal, state and local laws. To avoid fire and explosion hazard, do not burn or incinerate the battery.

### Setting Mode

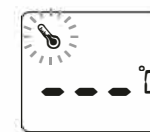
#### How To Set

##### 1. Mode setting:

Press Mode button when power on after you hear 1 beep, the screen will display or , Mode will change between and . When the button is pressed, it will confirm the Body Mode automatically when you switch to , and confirm the Object Mode automatically when you switch to . Then Mode setting is finished.



Body mode

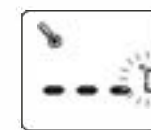


Object mode

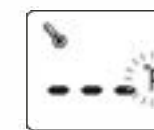
Note: The Body Mode is used to measure the forehead temperature, then the Object Mode is used to measure the object temperature.

##### 2. Unit setting:

Press Mode button when power on after you hear 1 beep, the screen will display or , Mode will change between and . When the button is pressed, it will confirm the Celsius Unit automatically when you switch to , and confirm the Fahrenheit Unit automatically when you switch to . Then Mode setting is finished.



Celsius/°C



Fahrenheit/°F

### Proper Use Of The Unit

#### Pre-measurement

About Normal Body Temperature & Fever

The temperature in the forehead and temple area differs from the internal temperature, which is taken orally or rectally. Vasoconstriction, an effect which constricts the blood vessels and cools the skin, can occur during the early stages of a fever. In this case, the temperature measured by the Infrared thermometer may be unusually low. If the measurement therefore does not match the patient's own perception or is unusually low, repeat the measurement every 15 minutes. As a reference, you can also measure the internal body temperature using a conventional oral or rectal thermometer.

Body temperature can vary from one individual/person to next.

It also varies by location on the body and time of day. Below shows the statistical normal ranges from different sites.

Please keep in mind that temperatures measured from different sites, even at the same time, should not be directly compared. Fever indicates that the body temperature is higher than normal. This symptom may be caused by infection, overdressing or immunization. Some people may not experience fever even when they are ill.

These include, but are not limited to, infants younger than 3 months old, persons with compromised immune systems, persons taking antibiotics, steroids or antipyretics (aspirin, ibuprofen, acetaminophen), or persons with certain chronic illnesses. Please consult your physician when you feel ill even if you do not have fever.

#### Table\*1 Body Site Normal Temperature Range

Body Site	Normal Temperature Range
Oral	0.6°C (1°F) or more above or below 37°C (98.6°F)
Rectal/ear	0.3°C to 0.6°C (0.5°F to 1°F) higher than oral temperature
Axillary (armpit)	0.3°C to 0.6°C (0.5°F to 1°F) lower than oral temperature

Note: Body Temperature at WebMD;

website: <http://firstaid.webmd.com/body-temperature>; retrieved at 2010 Jan 7.

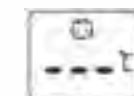
#### As a Body Thermometer

1). Press the START/STOP button, all symbols appear on the display, you can hear 1 short beep, then unit °C/°F on the display start to flash.

2). Press the Mode button to select Body Mode, the temperature unit flashes.

3). Move the probe close to the forehead, make sure the probe is flat and take measurement with a distance between 1-3cm. Press the START/STOP button, the meter will take measurement.

4). The measurement will be finished in 3 seconds, when it has been completed you can hear 3 short beeps, in the meantime, the reading will appear on the display with green LED blinks.



Note:

● If the reading is < 37.5°C (99.5°F), the display will show together with green LED.

● If the reading is ≥ 37.5°C (99.5°F) and < 43°C (109.4°F), the display will show together with red LED and ten short beeps.

● Only after the unit °C/°F start to flash again, it can continue to take measurement.

● As the forehead measurement temperature is likely to be affected by sweat, oil and the surroundings, the reading shall be taken as a reference only.

● If the probe is placed at an angle close to the forehead measurement, the reading will be affected by surrounding temperature.

● Babies' skin reacts very quickly in the ambient temperature. Therefore, do not take their temperature with the non-contact thermometer during/after breastfeeding, because the skin temperature may be lower than the internal body temperature.

